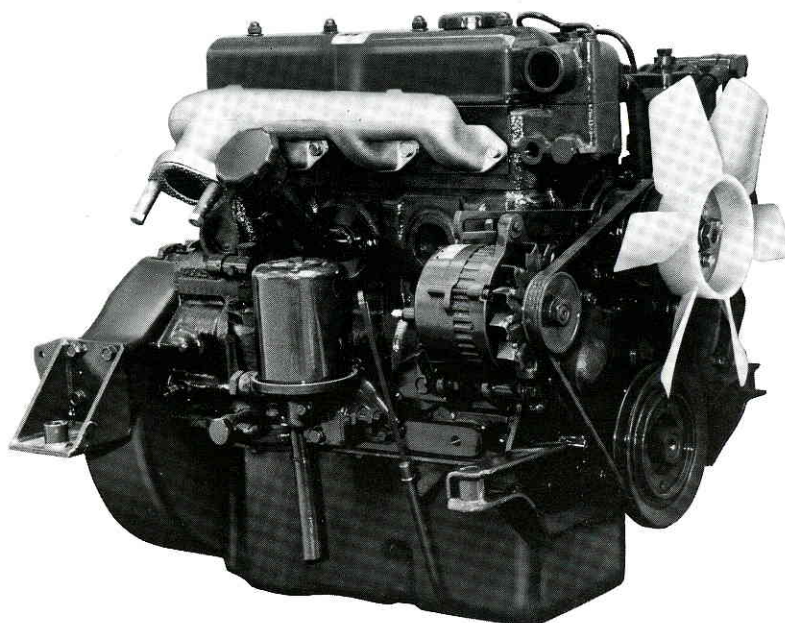


MITSUBISHI DIESEL ENGINE

4DQ50



SPECIFICATIONS

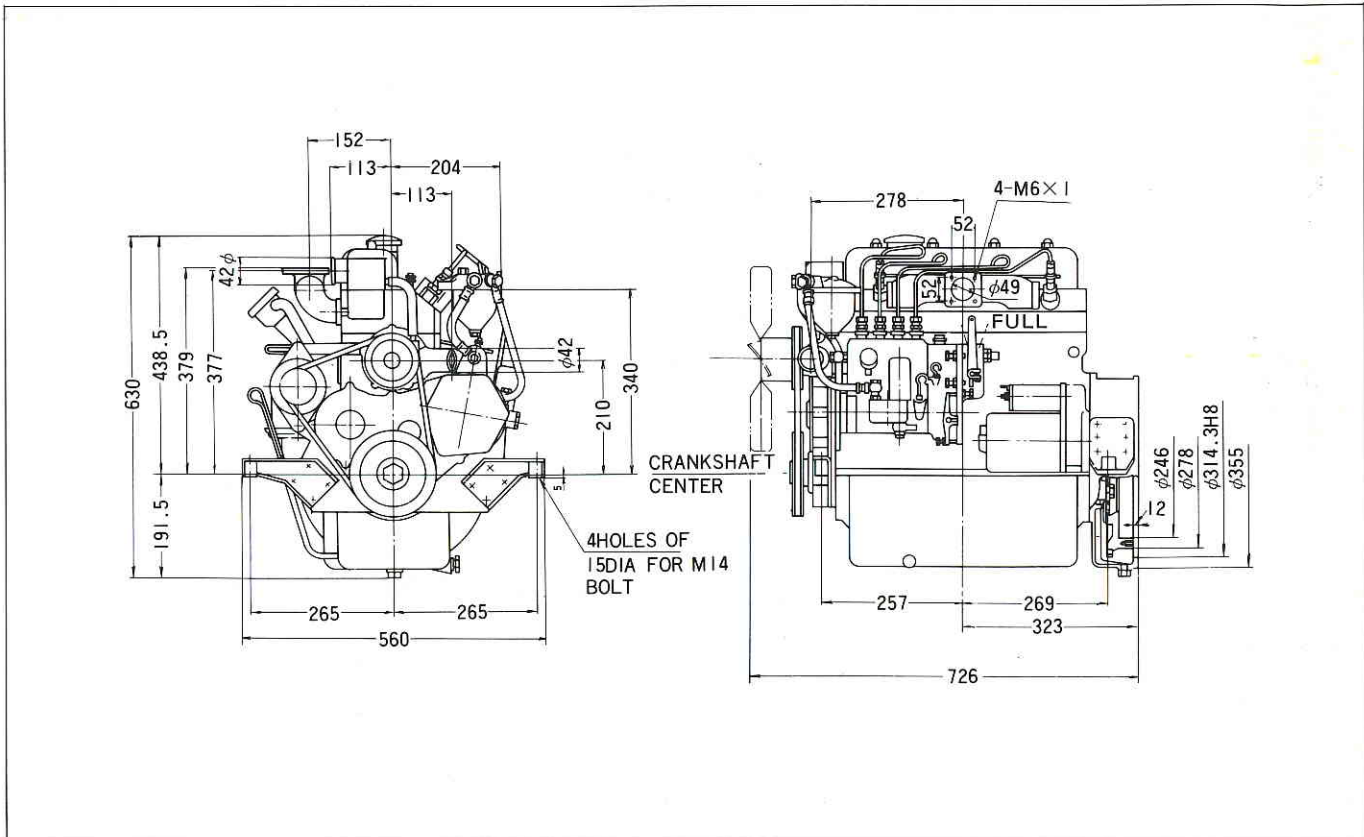
Model	Mitsubishi	4DQ50
Engine type		4 cycle, water cooled, in-line 4 cylinders, swirl combustion chamber, naturally aspirated, diesel engine
Bore x Stroke—Cylinder volume (mm x mm—cc)		84 x 94 — 2,083
Compression ratio		21 : 1
Rotation		SAE standard (Counterclockwise when viewed from flywheel end)
Starting system		Electric motor (DC24V-3kW) with Heater plug
Fuel oil system		Bosch type fuel injection pump and Throttle type injection nozzle. Fuel oil : Diesel fuel oil (ASTM No. 2-D)
Lubricating oil system		Forced lubrication by trochoid pump. Lubricating oil : API service grade CC class, SAE No. 30
Governing system		Mechanical centrifugal type
Output (HP/rpm) SAE J816b without fan	Maximum	62/3600
	Intermittent	52.5/3600
	Continuous	47.5/3600
Output (PS/rpm) DIN 6270 without fan	B (Int.)	52.5/3600
	A (Cont.)	47.5/3600

POWER SELECTION (HP or PS)

Engine speed	rpm	1,500	1,800	2,000	2,500	3,000	3,600
Power unit (Continuous without fan)	4DQ50	23	30	34	42.5	47	—
Generator (Prime without fan)	4DQ50	22.5	30	—	—	45.5	47.5
Construction machinery (with fan)	4DQ50	22	29	33	41	45	—
Fan loss (approx.)		1.0	1.0	1.0	1.5	2.0	2.5

All figures subject to change without prior notice.
Photo includes optional accessories.

DIMENSIONS



STANDARD ACCESSORIES

Starting motor
Heater plug (sheathed type)
Fan drive (belt & pulley)
Flywheel housing (SAE #5)
Exhaust manifold (air cooled type)
Fuel feed pump
Blow-off breather
Operation manual

Alternator (with voltage regulator)
Fan (pusher type)
Flywheel (10.94" outside dia.)
Governor (mechanical type)
Fuel filter (paper element type)
Lub. oil filter (full flow paper element type)
Oil pan (7 liter)
Parts catalog

OPTIONAL ACCESSORIES

Air cleaner (dry paper element type)
Exhaust silencer
Radiator (with cowl)
Battery switch (knife edge type)
Safety stop device (low oil press., high water temp., over speed)
Engine mounting (front & rear)
Automatic injection timer
Fuel transfer pump

Exhaust outlet
Low noise type exhaust silencer
Battery
Instruments (tachometer, ammeter, water temp. gage, oil press. gage, glow lamp, starter switch)
Engine control
Lub. oil cooler
Fuel tank
Service manual

MITSUBISHI HEAVY INDUSTRIES, LTD.
ENGINE DIVISION

5-1, Marunouchi 2-chome, Chiyoda-ku, Tokyo 100, Japan
 Phone: Tokyo (03) 212-3111, Telex: J22282 HISHIJU

Catalog No. SE-008-21

HC00-02090, R Printed in Japan