

DIESEL SETS

SAMOFA ***DIESEL***



SETS WITH AIR-COOLED AND WATER

Samofa generating sets, driven by robust and reliable engines, are extraordinarily suited for continuous service at full load.

The standard sets may be supplied with and without switch panel, in stationary, transportable and wheeled execution.

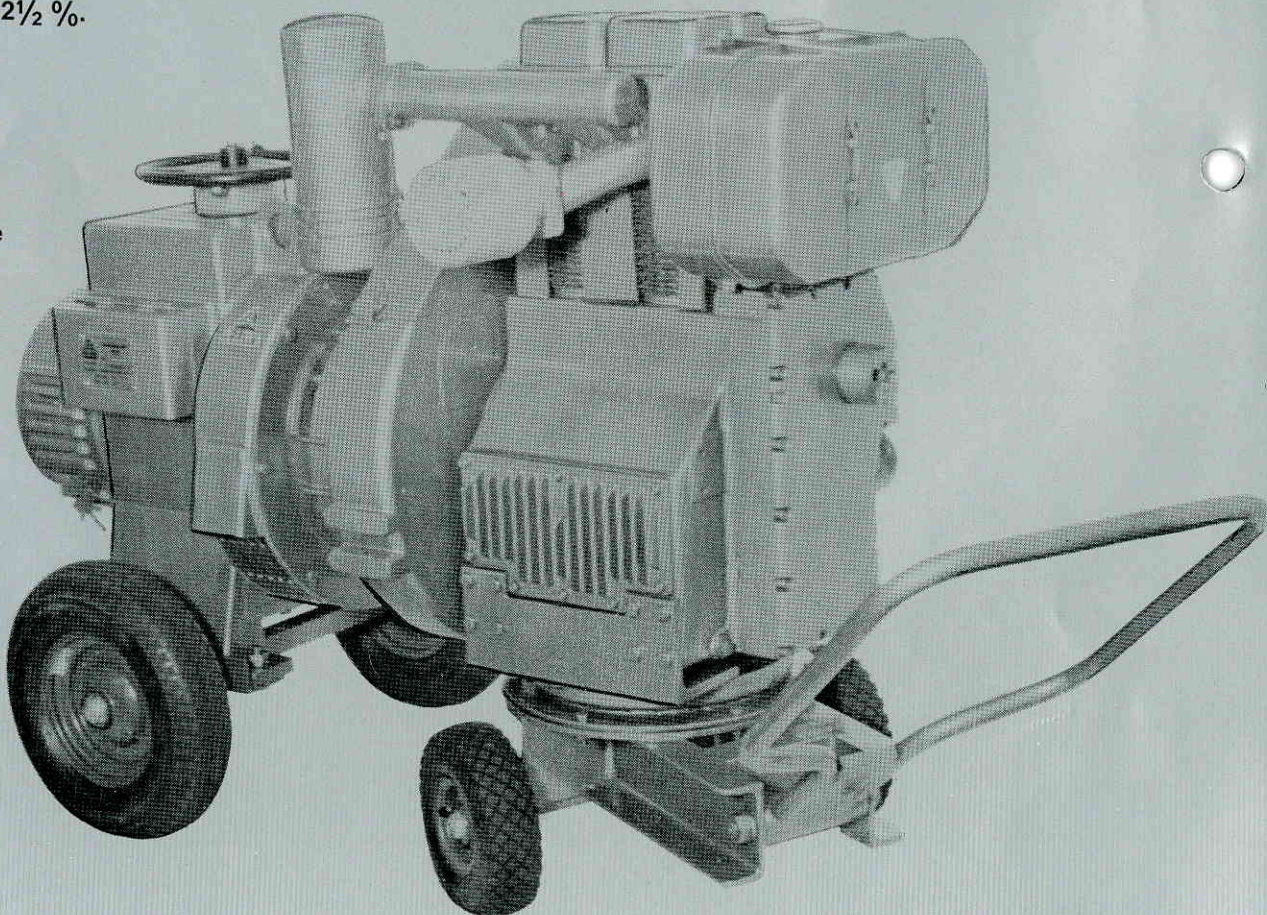
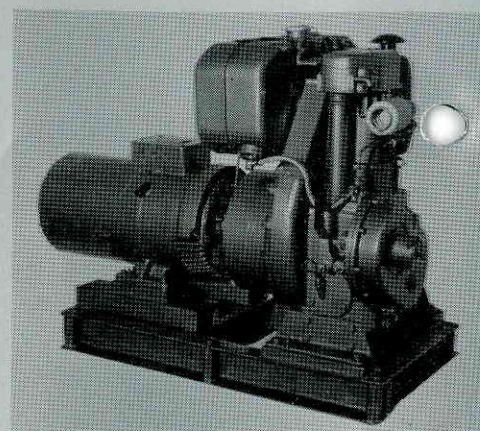
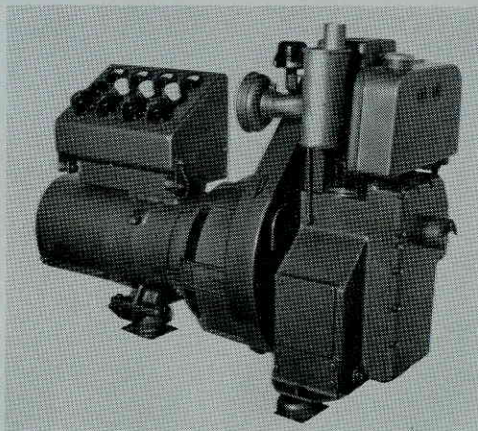
Some technical data of our standard sets:

- 1-phase, tension 110 V alt. 220 V,
- 3-phase, tension 127/220 V alt. 220/380 V,
- frequency 50 or 60 cps.,
- tropical insulation,
- radio-interference suppression,
- voltage regulation between no load and full load $\pm 2\frac{1}{2}\%$.

Our manufacturing programme of diesel sets is too wide for being completely described in this leaflet. Besides the standard sets we also supply sets in accordance with principal's requirements.

Samofa sets are operating in large numbers throughout the world.

Write for information!



AIR-COOLED DIESEL ENGINES

SAMOFADIESEL

Samofa, the Dutch abbreviation for Co-operating Engine Works, is an enterprise formed by four leading Dutch engine manufacturers, each of which put in their technical know-how.

The Samofa manufacturing programme comprises:

- Air-cooled and water-cooled diesel engines for stationary and industrial applications.
- Air-cooled and water-cooled marine diesel engines.
- Reverse gears with and without reduction.
- Diesel sets.

Owing to very strict quality checks all Samofa products have acquired an excellent reputation.

The engines are well-known for their robust construction, easy starting, minimum fuel consumption, maximum reliability and little cost of maintenance.

Samofa pumping sets can be supplied in a large variety.

For stationary applications, as well as in transportable and wheeled executions.

Low pressure, medium pressure and high pressure pumps.

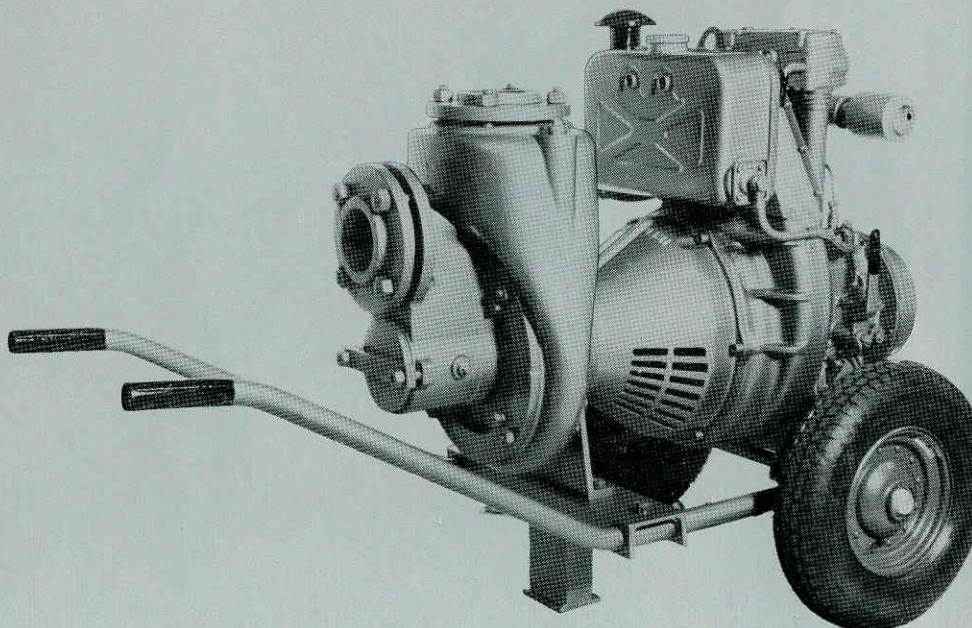
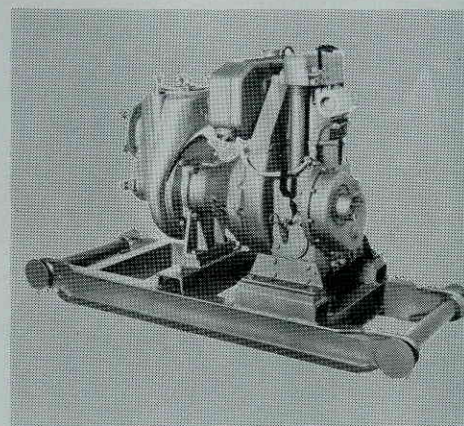
Self priming or non-self priming.

Pumps for polluted and unpolluted liquids.

Pumps for contractors, industries, shipping, horticulture, nursery gardens, etc.

For well-drainage, polder-drainage, pile driving, fire-extinguishing plants, raining plants, as bilge-pump, general service pump, etc.

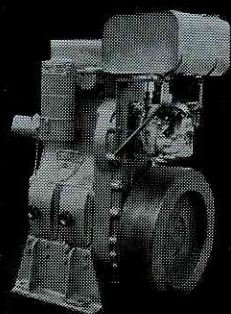
Samofa can supply whatever pumping set you require.



DIESEL ENGINES

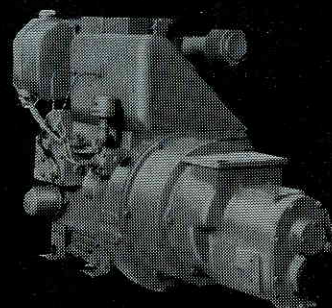
MOTORENFABRIEK SAMOFA N.V.
BOERHAAVELAAN 2
HARDERWIJK/HOLLAND
TELEPHONE 03410-3041
CABLES SAMOFAMOTOR
TELEX 47330

SAMOFA DIESEL



Samofa stationary diesel engines, thousands of which are in use for driving generators, pumps, compressors, winches, concrete mixers, conveyors etc, are produced as:

- 1-cylinder air-cooled diesel engines from 1500 to 2500 r.p.m.
 - type "80" from 4.5 to 7 HP.
 - type "85" from 6 to 10 HP.
 - type "88" from 7 to 11.5 HP.
- 1- and 2-cylinder air-cooled diesel engines
 - type "95" from 1500 to 2000 r.p.m.
 - type "195" from 9.25 to 12.5 HP.
 - type "295" from 18.5 to 25 HP.
- 1- and 2-cylinder water-cooled diesel engines
 - type "S-108" from 1000-1500 r.p.m.
 - type "1-S-108" from 10-15 HP.
 - type "2-S-108" from 20-30 HP.



Samofa marine propulsion engines have found their market and are operating in waters throughout the world.

The engines excel in simple operation and a minimum of maintenance.

The Samofa marine propulsion engines are supplied with the same outputs and r.p.m. as the stationary engines.

Reverse gears with or without reduction are of our own make.

Complete propeller shafts, stern tubes and propellers are supplied as well.

Samofa marine diesel engines repay themselves!

